



PROGRAMMING GUIDE

For the following models manufactured after 2012:

BELLE EPOQUE
CLASSIC BARLUME
SIXTIES COMPACT



To know if the model is manufactured after 2012 look if the serial number or do the following procedure:

1. Turn off the machine
2. Press and hold the last two buttons of the first group (your left), then turn on the machine
3. If the 5 LED are blinking the machine was manufactured after 2012

LED indication

Group 1

Group 2

Group 3

LEDs off



LEDs on



LED blinking



LED blinking slowly



PROGRAMMING MENU

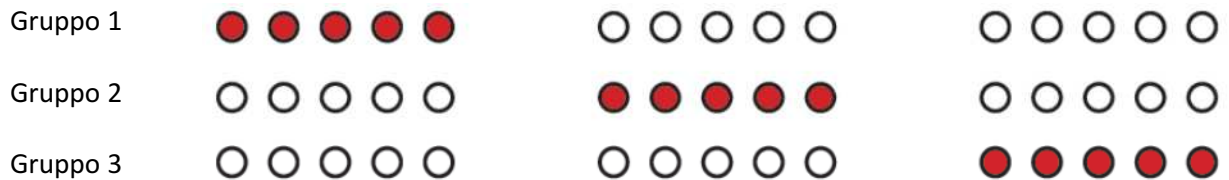
1. To enter the programming menu the key is needed (not for doses setting)
2. The first button stands for +
3. The last button stands for –
4. The central button stands for ENTER
5. Only by pressing ENTER the settings are saved



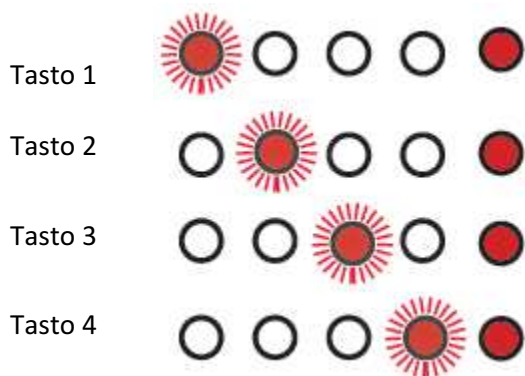
DOSES SETTING

1. To set the doses the programming key is not needed
2. Turn off the machine
3. Press & hold the last two buttons of the first group, then turn on the machine. First group LEDs are ON

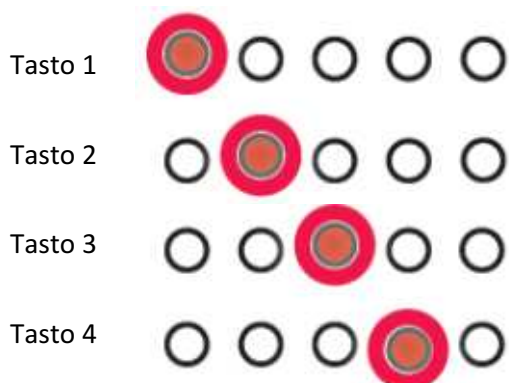
4. Select Group to program with button +



5. Press ENTER
6. LED on selected button is blinking



7. Press ENTER, LED on the button is blinking slowly. Now you can program the dose



8. Simulate an extraction: use the selected button to start & stop the extraction

TIME SETTING

1. Turn the KEY, first LED is blinking



2. Press ENTER, first LED OFF



3. On Group 2 you can see actual time, set it by pressing + and -. From 0 to 23:



[Off] [Off] [Off] [Off] [Off]	0
[Off] [Off] [Off] [Off] [On]	1
[Off] [Off] [Off] [On] [Off]	2
[Off] [Off] [Off] [On] [On]	3
[Off] [Off] [On] [Off] [Off]	4
[Off] [Off] [On] [Off] [On]	5
[Off] [Off] [On] [On] [Off]	6
[Off] [Off] [On] [On] [On]	7
[Off] [On] [Off] [Off] [Off]	8
[Off] [On] [Off] [Off] [On]	9
[Off] [On] [Off] [On] [Off]	10
[Off] [On] [Off] [On] [On]	11
[Off] [On] [On] [Off] [Off]	12
[Off] [On] [On] [Off] [On]	13
[Off] [On] [On] [On] [Off]	14
[Off] [On] [On] [On] [On]	15
[On] [Off] [Off] [Off] [Off]	16
[On] [Off] [Off] [Off] [On]	17
[On] [Off] [Off] [On] [Off]	18
[On] [Off] [Off] [On] [On]	19
[On] [Off] [On] [Off] [Off]	20
[On] [Off] [On] [Off] [On]	21
[On] [Off] [On] [On] [Off]	22
[On] [Off] [On] [On] [On]	23

4. Confirm by pressing ENTER

NIGHT CYCLE SETTING

- 1. Turn the key
- 2. Press +, second LED is blinking:



- 3. Press ENTER, second LED OFF. On Group 2 you can see actual shutdown time of the machine, with + and – you can modify it. Confirm by pressing ENTER



○	○	○	○	○	0
○	○	○	○	●	1
○	○	○	●	○	2
○	○	○	●	●	3
○	○	●	○	○	4
○	○	●	○	●	5
○	○	●	●	○	6
○	○	●	●	●	7
○	●	○	○	○	8
○	●	○	○	●	9
○	●	○	●	○	10
○	●	○	●	●	11
○	●	●	○	○	12
○	●	●	○	●	13
○	●	●	●	○	14
○	●	●	●	●	15
●	○	○	○	○	16
●	○	○	○	●	17
●	○	○	●	○	18
●	○	○	●	●	19
●	○	●	○	○	20
●	○	●	○	●	21
●	○	●	●	○	22
●	○	●	●	●	23

4. You can now set the time when the machine is switching ON that you can see on Group 2: modify with + and -. Confirm by pressing ENTER



○ ○ ○ ○ ○	0
○ ○ ○ ○ ●	1
○ ○ ○ ● ○	2
○ ○ ○ ● ●	3
○ ○ ● ○ ○	4
○ ○ ● ○ ●	5
○ ○ ● ● ○	6
○ ○ ● ● ●	7
○ ● ○ ○ ○	8
○ ● ○ ○ ●	9
○ ● ○ ● ○	10
○ ● ○ ● ●	11
○ ● ● ○ ○	12
○ ● ● ○ ●	13
○ ● ● ● ○	14
○ ● ● ● ●	15
● ○ ○ ○ ○	16
● ○ ○ ○ ●	17
● ○ ○ ● ○	18
● ○ ○ ● ●	19
● ○ ● ○ ○	20
● ○ ● ○ ●	21
● ○ ● ● ○	22
● ○ ● ● ●	23

5. To deactivate nightcycle set the same shutdown and start up time.

BREWING TEMPERATURE SETTING (Boiler water temperature)

Boiler temperature factory setting is 126°C which is indicated with 0 on the following table. You can change temperature from -10°C to + 6°C on the standard.

1. Turn the Key
2. Press twice + button. Third LED is blinking (fourth on machines manufactured before 2017)



3. Press ENTER, third(or fourth)LED OFF. On Group 2 temperature is shown:



○	●	○	●	○	-10
○	●	○	○	●	-9
○	●	○	○	○	-8
○	○	●	●	●	-7
○	○	●	●	○	-6
○	○	●	○	●	-5
○	○	●	○	○	-4
○	○	○	●	●	-3
○	○	○	●	○	-2
○	○	○	○	●	-1
○	○	○	○	○	0
●	○	○	○	●	1
●	○	○	●	○	2
●	○	○	●	●	3
●	○	●	○	○	4
●	○	●	○	●	5
●	○	●	●	○	6

4. Set desired temperature with + and – and confirm by pressing ENTER

TROUBLESHOOTING

Steam Boiler is cold

1. Check if the heating element safety device has been activated
2. Turn the Key
3. Press + until the fifth LED is blinking
4. Press ENTER
5. heating element safety device is deactivated



6. heating element safety device is activated



7. Due to even temporary lack of water in the Boiler, heating element safety device has been activated: check if the water is flowing from the water supply properly, then deactivate heating element safety device by pressing ENTER
8. Turn on the key and verify if the water is heating (5 Leds are blinking one by one)

Flowmeter dirty or defected

1. When the water flow is slow or blocked, and the first LED on Group 1 is blinking, you may have to replace the flowmeter.



Water level control in the Boiler dirty or defected

1. When the level probe is not detecting any water presence, the machine shuts down. Quando la sonda di livello non riconosce la presenza di acqua in caldaia la macchina si spegne per prevenire la resistenza. Il problema viene indicato con questo errore:



Temperature probe defected

1. If the control box doesn't recognize temperature value, the problem is indicated with this error:

