



Sette 270, 270W Hook Cylinder

Tools Needed: T-10 Torx Bit, Bit Driver, Forceps



***** Unplug the power supply cord from the rear of the machine. *****

1. Tilt the machine forward on a hand towel, resting the machine on its face



2. Remove the rear rubber foot (use pliers if needed)

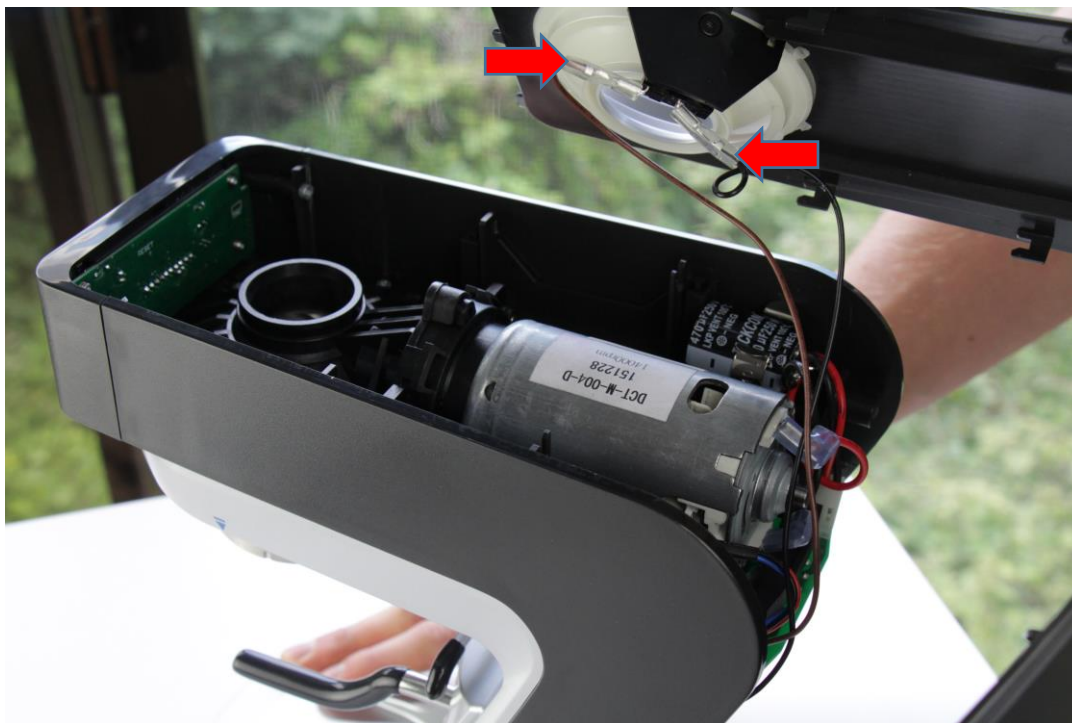


3. Remove the four Torx screws from the rear of the machine, and the one torx screw that lies inside the rear foot slot. Screw positions indicated below.

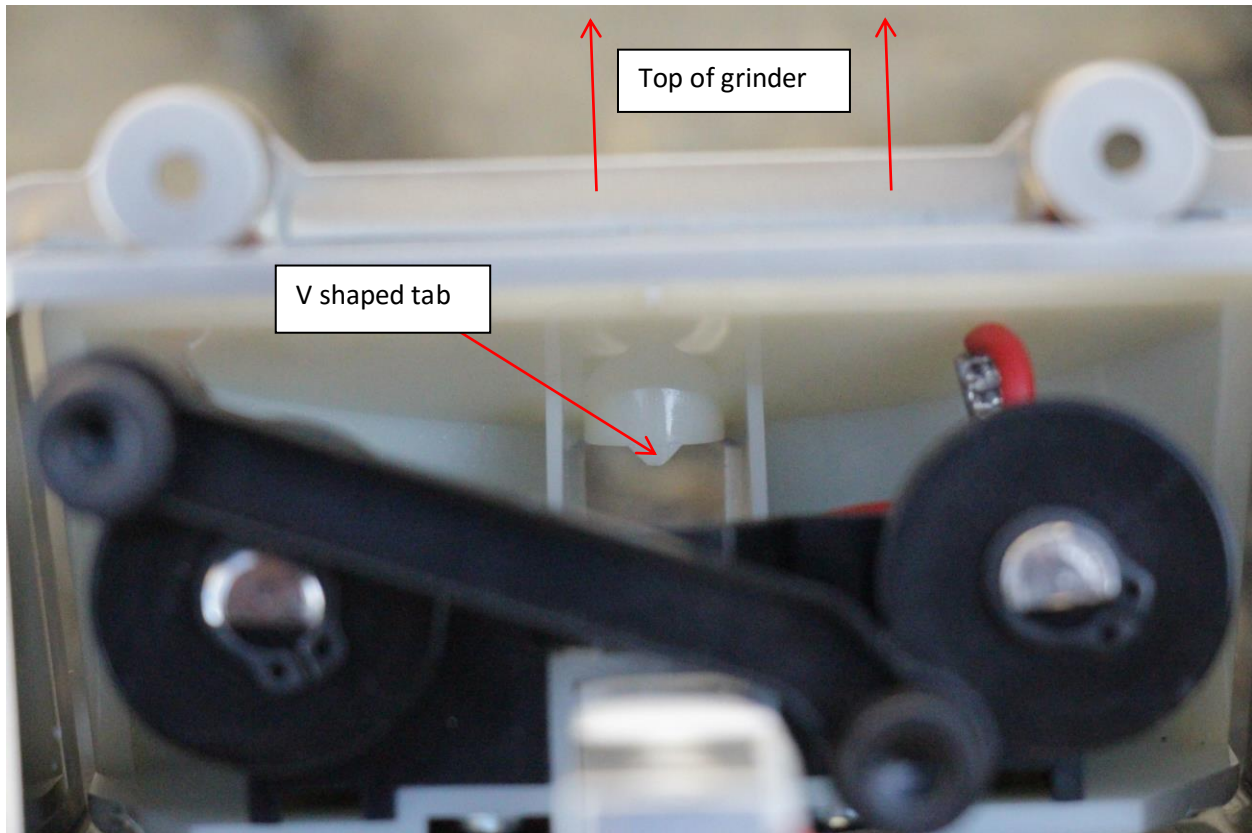


4. Stand the machine back upright and gently pull the entire rear housing towards the back of the grinder. There will be wires connected to the casing so be gentle.





5. There will be two wires attached the casing, gently slide the spade connectors off and set the case to the side.
6. Now you will be able to see the hole that the cylinder should fit in. There is a V shaped tab that engages with the groove in the cylinder.



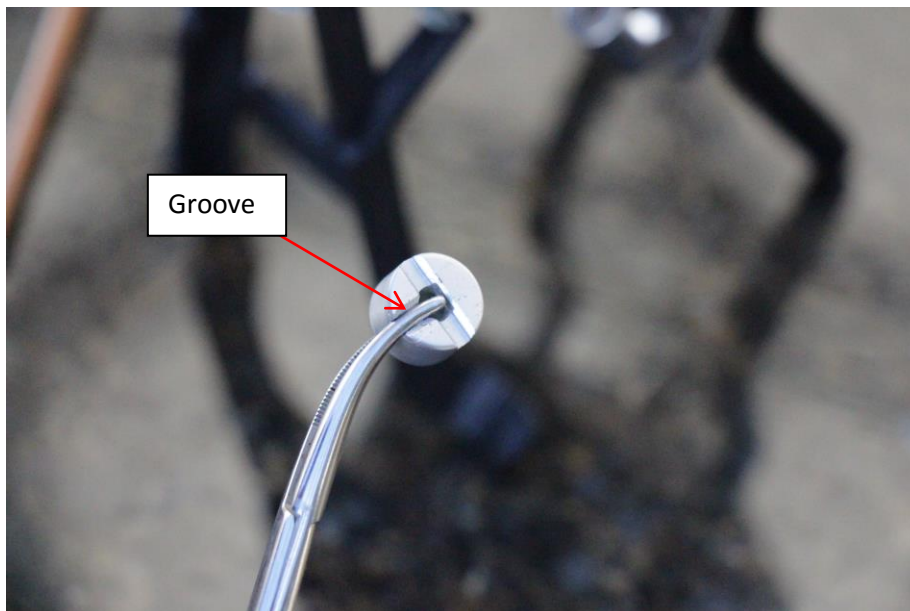
Place the spring in the cylinder- it only fits in one side of the cylinder.

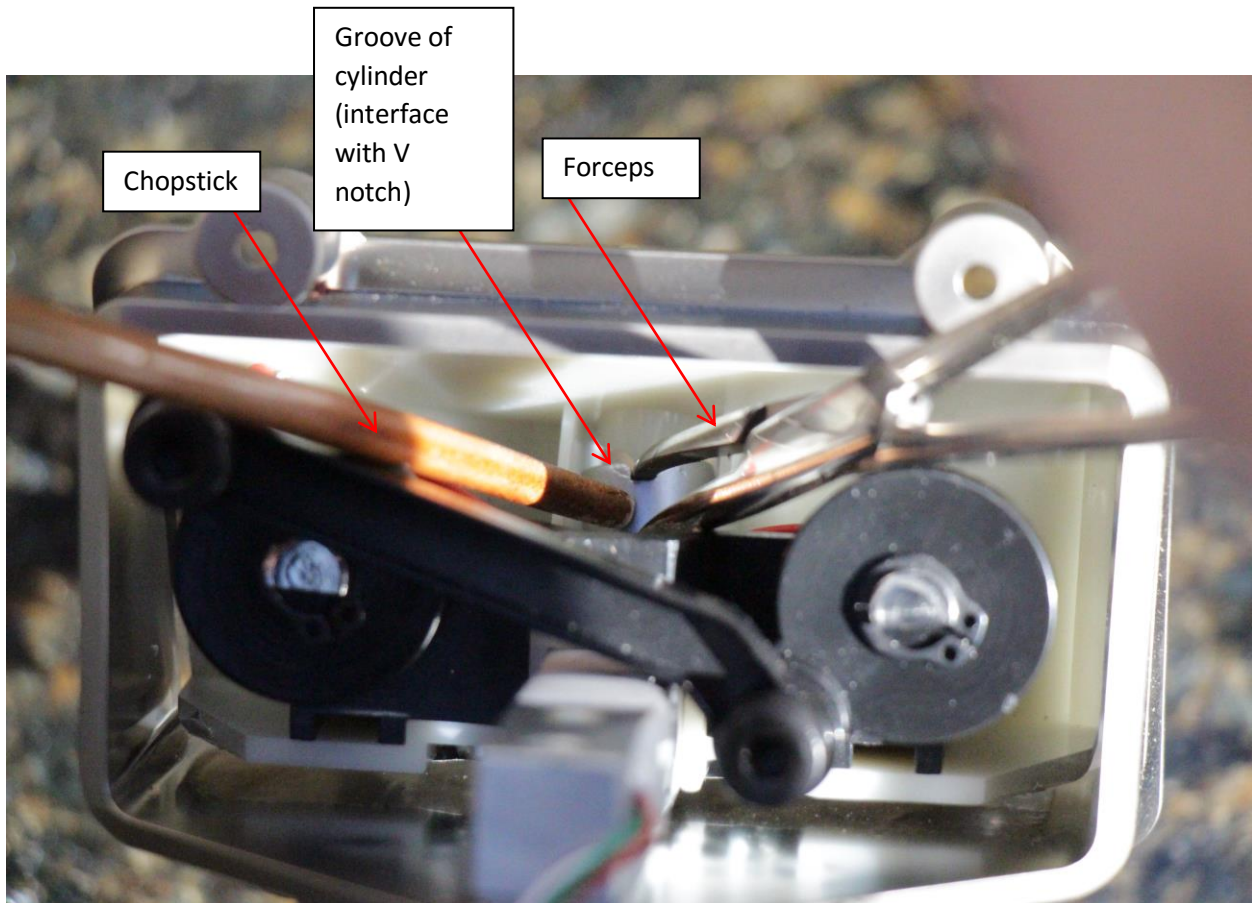


We have found forceps to be the absolute best tool, using other tools makes this process a lot more difficult. Use the forceps to compress the spring against the cylinder.



Here you can see the non-spring side of the cylinder and how nicely the forceps fit into the groove

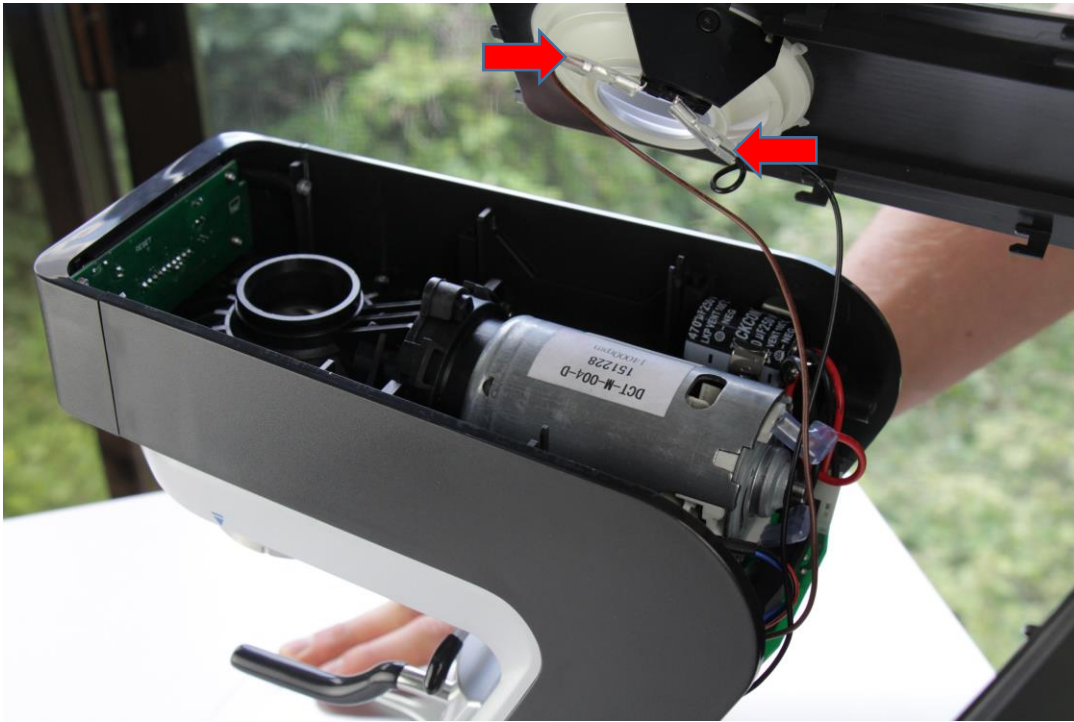




This is the tricky step.

Use the forceps to get the cylinder close to where it needs to be. The spring faces down, the groove faces up against the V tab. Use a chopstick to push the cylinder into place, taking care to prevent the spring from escaping.

Reassembly



1. Slide the spade clips back onto the interlock switch.

*Pay attention to how the wires naturally want to sit. The wires will want to slide on and lie in the grinder a certain way and if you put it back the way it came apart, it will go together much easier.



2. Get the case roughly in position, as shown above



3. Work the case on such that it is flush with the sides and ready to slide forward to finish installation



4. Alternate pushing on the bottom and on the top, as depicted above, to slide the case the rest of the way forward into position.
5. Reinstall the screws and feet

If you have any questions or concerns, please email support@baratza.com or call at 425-641-1245.